

Growing in GREEN

Growing in Green – Klondike Cheese Company

Limitless opportunity. Invaluable resources. Ultimate convenience. Green County, Wisconsin epitomizes these characteristics and more. One local company has been reaping the rewards Green County offers for almost a century.

The Buholzer Family has been making cheese, and making history, in Green County since 1925. In 1972, Al and Rosa Buholzer, along with sons Ron, Dave and Steve, founded Klondike Cheese Company.

Nestled in the heart of Wisconsin's rich agriculture, Klondike Cheese Company benefits from Green County's farmland. Equipped an 11 million gallon waste water treatment plant, built in 2004, Klondike uses the treated water to irrigate its hundreds of acres of farmland. In addition, over 60% of Klondike employees are residents of Green County.

Klondike Cheese Company's continued success and consistent growth has lead to construction of a new building; which is due to be completed in early 2013. Installation of the yogurt manufacturing equipment is already in place and things are on pace for an early March start-up.

Klondike Cheese Company's top selling product is its Odyssey Brand Feta Cheese. In 1997, an expansion began for the Feta Make Room. The Feta plant opened in 2000, and is home to one of only two coagulators in the United States.

Other previous expansions include three new lines to crumble

Feta and the installation of the state of the art robotics for production in 2009.

The Buholzer Family company was one of 254 companies that entered the American Cheese Society's Judging and Competition in Raleigh, North Carolina. Almost 2,000 different products were submitted. Although they are extremely proud of all their awards, one of the most significant is the 4th place Klondike Cheese Company received for their fat free feta. The significance of this award is the fact that it was entered in the low fat class because there is no fat free class. Each Ron, Dave and Steve Buholzer have earned the distinguished title of Master Cheesemakers.

In the case of Klondike Cheese Company, proof that Green County, Wisconsin continues to meet and exceed the demands of local business is not in the pudding; it's in the cheese.

"Green County is a great place for us to do business because of the wonderful variety of businesses and service companies, that support the cheese making industry

I feel we are fortunate to have such a great dairy producing industry, numerous contractors, and many different service and supply companies available locally."

**Ron Buholzer
President - Klondike Cheese Company**



**KLONDIKE
CHEESE COMPANY**



Contact the Green County Development Corporation for current opportunities to grow your business in the Green County area. Call Anna Schramke (608.328.9452) or email anna.gcdc@tds.net for information or to set up a confidential appointment. The sooner you call the sooner your business will reap the rewards of Growing in Green.



www.greencountyedc.com

Sites & Building for Growing Businesses

Green County Development Corporation works with area building owners and real estate professionals to provide a comprehensive data base of available sites and buildings. Over 50 Green County sites and buildings are included in the searchable data base. The data base provides details regarding the sites and buildings and includes photos, mapping and demographic information.

Many of the buildings are located in central business districts and are suitable for small retail and service businesses - great for new entrepreneurs. In addition, Green County has a few available manufacturing and warehouse spaces. The largest building, at 162,928 sq.ft., is located in Brodhead, and the newest posting is a 17,950 sq.ft. building is located in Monroe, WI.

To learn more about these buildings or to search the data base, go www.GreenCountyEDC.com and click on "sites and buildings" in the opening paragraph.



Johansen Building, located at 645 10½ Street – Monroe. 17,950 sq.ft. -For Sale or Lease.

Unemployment Rates for the Green County Region

	Green County, WI	Rock County, WI	Dane County, WI	Lafayette County, WI	Stephenson County, IL	5 - County Region	State of Wisconsin	United States
October 2012 <i>(not seasonally adjusted)</i>								
Civilian Labor Force - Total:	19,837	78,353	300,599	9,199	23,720	431,708	3,065,975	155,641,000
Number Unemployed:	994	5,531	11,939	386	2,159	21,009	173,745	12,258,000
Percent:	5.0%	7.1%	4.0%	4.2%	9.1%	4.9%	5.7%	7.9%
2011 Annual Average								
Civilian Labor Force - Total:	19,598	78,745	299,520	9,256	23,978	431,097	3,062,259	153,617,000
Number Unemployed:	1,429	7,429	14,491	557	2,395	26,301	228,828	13,747,000
Percent:	7.3%	9.4%	4.8%	6.0%	10.0%	6.1%	7.5%	8.9%

Brodhead, WI – revive. renew. live. breathe. do.

Located in south central Wisconsin, the Brodhead area is a place where the American spirit grows brighter. Entrepreneurs, agri-businesses and other endeavors thrive with inspired creativity within a community that supports commerce and job growth. Inspired by its surroundings, the community nurtures natural areas and seeks opportunities to create a sustainable way of life.

Brodhead is home to many wonderful resources, including a fully serviced industrial park; 3 locally owned banks; a revitalized downtown area, with several quaint stores; an eighteen-hole golf course - Decatur Lake Country Club; the Sugar River Raceway, a half-mile long paved asphalt road course designed



continued on page 3...

Brodhead...

and built specially for go-karting; and the Brodhead Historical Society preserving history through the Depot Museum. Located adjacent to the Sugar River, Brodhead is also noted as the southern entrance to the 23-mile Sugar River State Trail - biking, hiking, cross country skiing & snowmobiling.



The community balances history, small town living, industrial growth and progress. Located on the eastern edge of Green County, near the Rock County line, Brodhead has easy access to major metropolitan areas - within a two hour drive of Chicago, 40 minutes of Madison, 90 minutes from Milwaukee and one hour from Rockford.

The largest employers in Brodhead include Stoughton Trailers and Kuhn North America, Inc. Pulling from a community rich with a skilled and dependable workforce, Kuhn bases its North American Headquarters in Brodhead. Kuhn is one of the largest manufacturers of agricultural implements and machinery in the world.

For information on Growing your business in Brodhead, WI, visit www.GreenCountyEDC.com or contact Anna Schramke, Green County Development Corporation, 608-328-9452.

Brodhead Snapshot

- Population: 3,352
- Regional Population: 55,192 (15 mile radius)
- Bachelor's Degree or Higher: 11.47%
- Household Median Income: \$47,792
- Job Growth Rate: -4.93%
- Commute Travel Time: 23 min.
- Total Business within Commute: 1,289
- Brodhead Commercial / Industrial Sites: 38.673 acres City-Owned



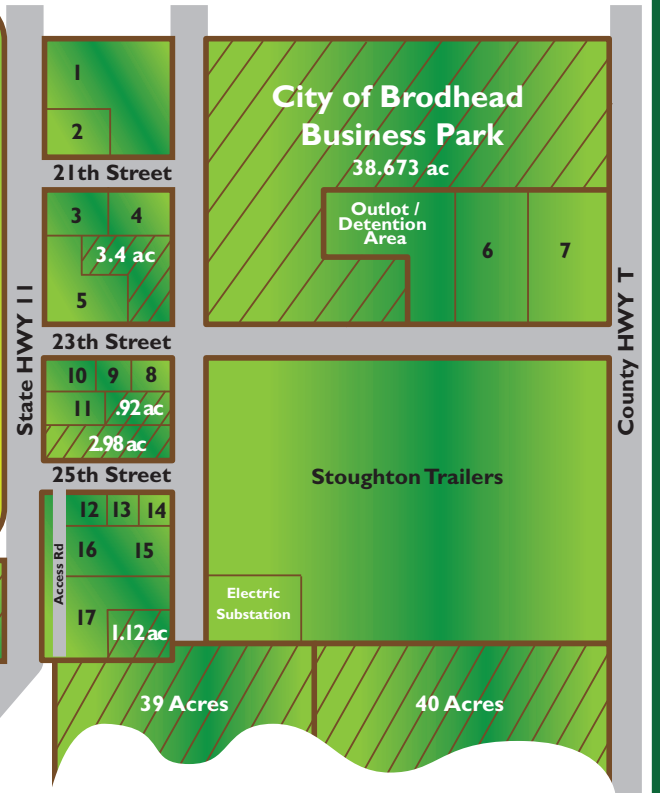
Brodhead Southside Business District

(map not drawn to scale)

1. Monroe Clinic
2. Sugar River Bank
3. McDonald's
4. 21st Street Commercial Center
5. Brodhead Chevrolet
6. Vintage Chariots
7. Brodhead Farm & Home
8. Commercial / Office
9. AVAILABLE Building - 13,000 sqft.
10. Mercy Clinic
11. Dollar General
12. United Chiropractic
13. Commercial / Office
14. Bramble (office)
15. Mini Storage
16. Body Crafters Autobody
17. AVAILABLE Building - 13,110 sqft.



8.6 ac



Green County Development Participates in 2012 World Dairy Expo



Pictured: Nico Leonard, Yolandi Boom and JD Leonard, Representatives/Owners of Leo Ag, Monroe.

Agriculture, food production, food processing and food packaging represent an important economic force in Green County. This industry cluster includes hundreds of family owned farms and the related businesses and industries that provide equipment, services and other products needed to process, market and deliver food and fiber to consumers.

To promote Green County's Agri-Business Industry, GCDC recently participated in the World Dairy Expo -the world's largest dairy-focused event. Over 65,000 producers and

industry professionals from over 90 countries gathered in Madison, WI on October 2-6 to learn about the latest in technologies, products and services should. Two Green County manufacturers, Kuhn North American and Leo Ag were among the over 850 exhibiting companies from 28 countries displaying their products at the Expo.



GCDC partnered with Blackhawk Technical College to promote their Agri-Business Specialist Certificate program and other agri-business training opportunities. The Agribusiness Specialist program provides students with the skills and experience for future agricultural employment in a variety of settings including: production, service and supply, marketing and sales, research, and agricultural tourism. Emphasis is on career leadership, agribusiness management, safe and sustainable agriculture, and renewable energy.

Agri-Businesses looking for a location to expand will find Green County an excellent option. The strength of this industry cluster, the local infrastructure and the proximity to major metropolitan areas provide growing businesses the resources needed to be successful today and in the future.

Up-Coming Events!

"The Past, Present & Future of Southwest Wisconsin: Examining the Demographic & Economic Trends of Our Region"
December 14th, 2012

11:00 to noon
 Iowa County Health & Human Services Building, Dodgeville, WI

International Economic Development Council Leadership Summit

January 27-29, 2013
 Orlando, FL
www.IEDCOnline.org

Brodhead Chamber of Commerce Annual Meeting & Banquet

January 21, 2013
 6pm – Cocktails; 7pm - Dinner
 Kuhn North America, Inc.,
 Brodhead, WI

Governor's Conference on Economic Development

February 6-8, 2013
 Monona Terrace, Madison, WI
www.WEDA.org

WEDA Legislative Day
February 6, 2013
 Madison, WI

IEDC Business Retention & Expansion Course

March 21-23, 2013
 Madison, WI
www.IEDCOnline.org

Happy Holidays!



www.greencountyedc.com

Anna Schramke, CECD Executive Director
 Green County Development Corporation
 Green County Courthouse - 2nd Floor
 1016 16th Avenue • Monroe, WI 53566
 P: 608-328-9452 • gcdd@tds.net